



SAIL 13 / 17

SCONCES OUTDOOR

ADA
COMPLIANT
location:
WET

SPECIFICATIONS:

DESCRIPTION

Wall-mounted **ADA-compliant** sconce featuring handcrafted glass.

LAMPING

Standard: 2x 40W B10 120V incandescent, lamp not included. Dimmable with standard incandescent dimmer (not included).

CFL: 26W 4-Pin CFL with non-dimming electronic ballast. 120V, lamp not included.

LED: 8W Replaceable LED Filament lamp, 120V, dimmable, 2200°K CCT, 540 lumens, 15,000 hours, lamp included. (For Opal only)

LED Edison: 5W Replaceable S-Style LED Filament lamp, 120V, dimmable, 2200°K CCT, 540 lumens, 15,000 hours, lamp included. (For Bubble only)

DIFFUSER

Diffuser shall be handcrafted Opal Matte or Bubble glass. Sail 17 features decorative faceplate and aluminum fitter.

CONSTRUCTION

Stamped aluminum fitter is powder coated white. Glass is secured by stainless steel set screws.

MOUNTING

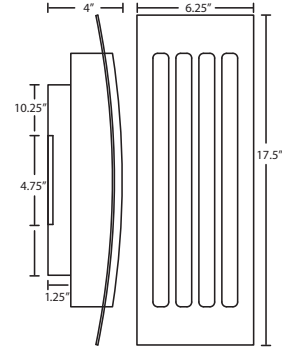
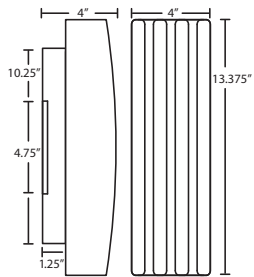
Installs directly to a 4" octagonal outlet box. 75°C supply wire required for incandescent lamping. Fixture is centered on the outlet box. Wall mount only.

LABELS

UL or ETL Listed. Suitable for Wet Locations (interior or exterior use).

Sail 13: #7855

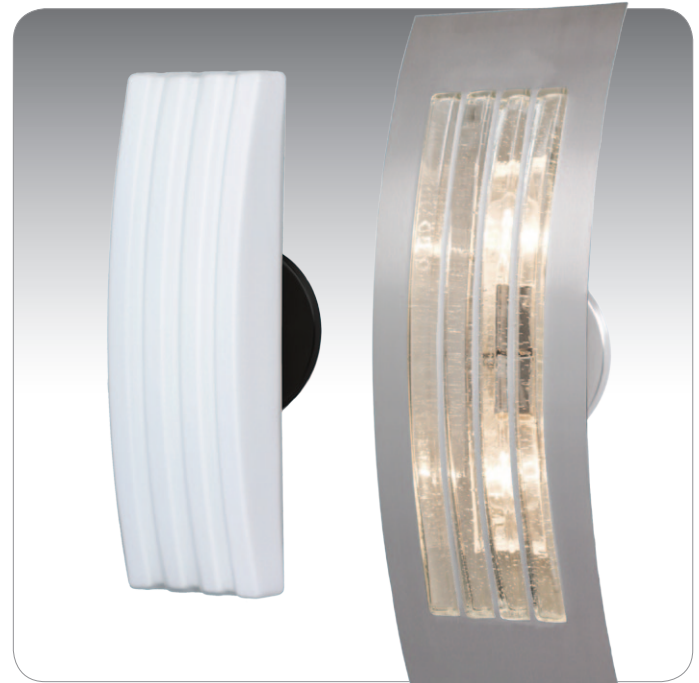
Sail 17: #SAIL17



FIXTURE	LAMP OPTIONS	METAL FINISH
SAIL17BB Bubble glass w/ decorative faceplate	(blank) 2x 40W B10 Incan	BR Bronze
SAIL17SW Opal glass w/ decorative faceplate	H1 1x 26W Quad 120V	BK Black
785507 Opal glass only	Q1 1x 26W Quad 277V	SL Silver
785550 Bubble glass only	EDIL 2x 5W LED Filament (For Bubble Only)	
	LED 1x 8W LED 120V, non-dimmable (For Opal only)	

Ex. SAIL17SW-BR
Sail 17 Sconce w/ Opal Glass with Bronze Faceplate,

Project Information:



SAIL 13 SHOWN IN OPAL MATTE (785507) & SAIL 17 SHOWN IN BUBBLE/SILVER (SAIL17BB-SL)

SAIL17SW-BR
OPAL/BRONZE

SAIL17SW-BK
OPAL/BLACK



All dimensions provided are nominal. Allowance must be made for dimensional tolerance in handcrafted glasses.

REV 1/17